



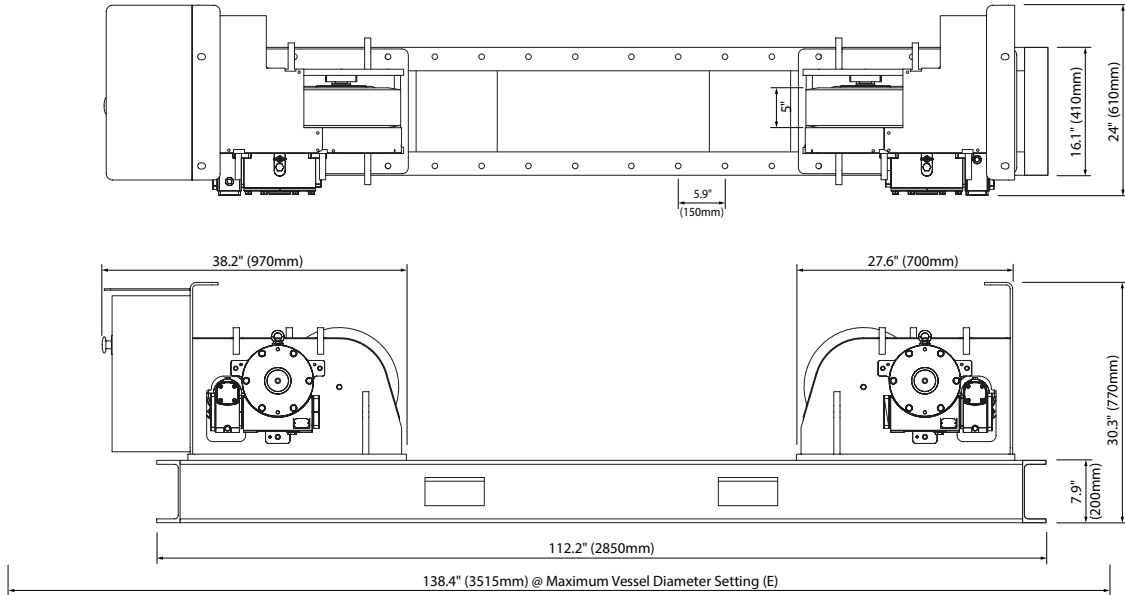
Stackable Design



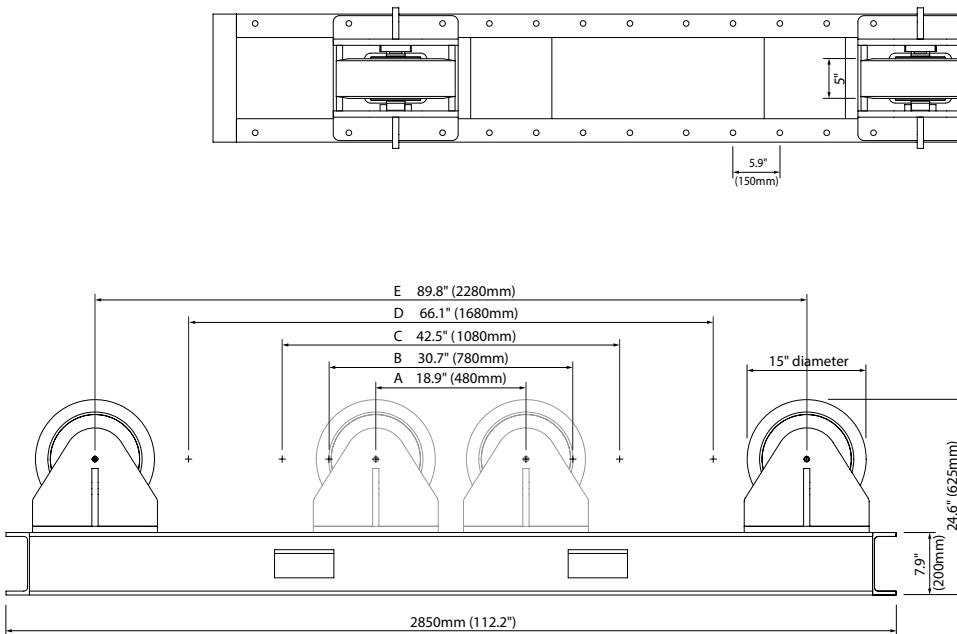
## Specification

<b>Model</b>	KP CR20 Conventional Rotator Set (Drive and Idler)
<b>Safe Working Load - Drive Unit</b>	10 tonne
<b>Safe Working Load - Idler Unit</b>	10 tonne
<b>Maximum Load Carrying Capacity - Set</b>	20 tonne (1 Drive & 1 Idler)
<b>Rotation Capacity, Drive Unit</b>	30 tonne
<b>Wheel Centre Distance</b>	18.9, 30.7, 42.5, 66.1, 89.8in (480, 780, 1080, 1680, 2280mm)
<b>Vessel Diameter Capacity</b>	13.8in to 196.9in (350mm to /5000mm)
<b>Rotation Speed Range</b>	5.5 to 55.1 in/min (140 to 1400 mm/min)
<b>Tyre Type</b>	Polyurethane, 95A durometer shore rating
<b>Wheel Size</b>	15in diameter x 5in wide (381mm x 127mm)
<b>Overall Height to Top of Tyre</b>	24.6in (625mm)
<b>Remote Pendant Type</b>	Plug & Socket Five Push Button Control (forward/stop/reverse/speed control/e-stop), 50ft (15m) cable
<b>Rotation Drive Motors</b>	2 x 0.75kW
<b>Primary Input Power</b>	380 to 480 V, 3 Phase, 50/60Hz
<b>Input Current at Rated Load</b>	6.8amp
<b>Overall Length &amp; Width - Drive</b>	112.2in x 24in (2850mm x 610mm)
<b>Overall Length &amp; Width - Idler</b>	112.2in x 16.1in (2850mm x 410mm)
<b>Weight - Drive</b>	1645lb (750kg)
<b>Weight - Idler</b>	1102lb (500kg)

**Drive Rotator**



**Idler Rotator**



**Wheel Setting Workpiece Diameter Range**

Setting	Range
A	13.8" (350mm) - 31.5" (800mm)
B	31.5" (800mm) - 55.1" (1400mm)
C	51.2" (1300mm) - 86.6" (2200mm)
D	86.6" (2200mm) - 141.7" (3600mm)
E	126" (3200mm) - 196.9" (5000mm)